



Developed by:

Aakash (India) Projects & Builders Pvt. Ltd
Payal Cinema Complex
Mango, Jamshedpur - 831012

W: www.aakashindia.in

E: sales@akashindia.in

M: +91 70798 29999

Site Address:

Aakash Riviera
Dobo
Seraikela - Kharsawan

RERA NO.: JRERA/PROJECT/618/2019
Building Permit No. 02 Dated 1.07.2019

Concept & Design by: BetheBee.in

AAKASH
riviera
NEW JAMSHEDPUR

DISCLAIMER: This is not a legal document. The plans, elevations and photographs are conceptual and subject to change. The actual product shall vary according to the sole discretion of the developer. No claims shall be entertained by the developer depending on this material. Though the contents of the brochure have been compiled with the intention to provide information to the best of our knowledge, there may be some changes from time to time which may not reflect on the brochure. While enough care is taken by Aakash (India) Projects & Builders Pvt. Ltd to ensure that the information on the brochure is up to date and accurate, the users are advised to verify designs, plans, specifications, facilities, features, etc. with our team.



Imagine you are sailing ahead in search of

beyond

Imagine you are counting clouds immersing in

infinity





Imagine you are making your moment more

precious



Because life is giving you a chance to say out loud...

Hello *luxury*

Luxury Homes. Inspired by *nature*



Gateway of your global

living

Studded with super luxurious apartments and duplexes, exclusive club, social plaza and corporate spaces, the project is truly a one-of-its-kind in Jamshedpur. By the river, in the lap of hills, the exclusive location makes this, a project a notch higher.

4 Towers by the river [G+11]

132 Luxury Apartments

River-facing Row of Boutique Restaurants

Club Riviera | 3 Screen Gold Class Multiplex

Banquet | Confectionery Outlets



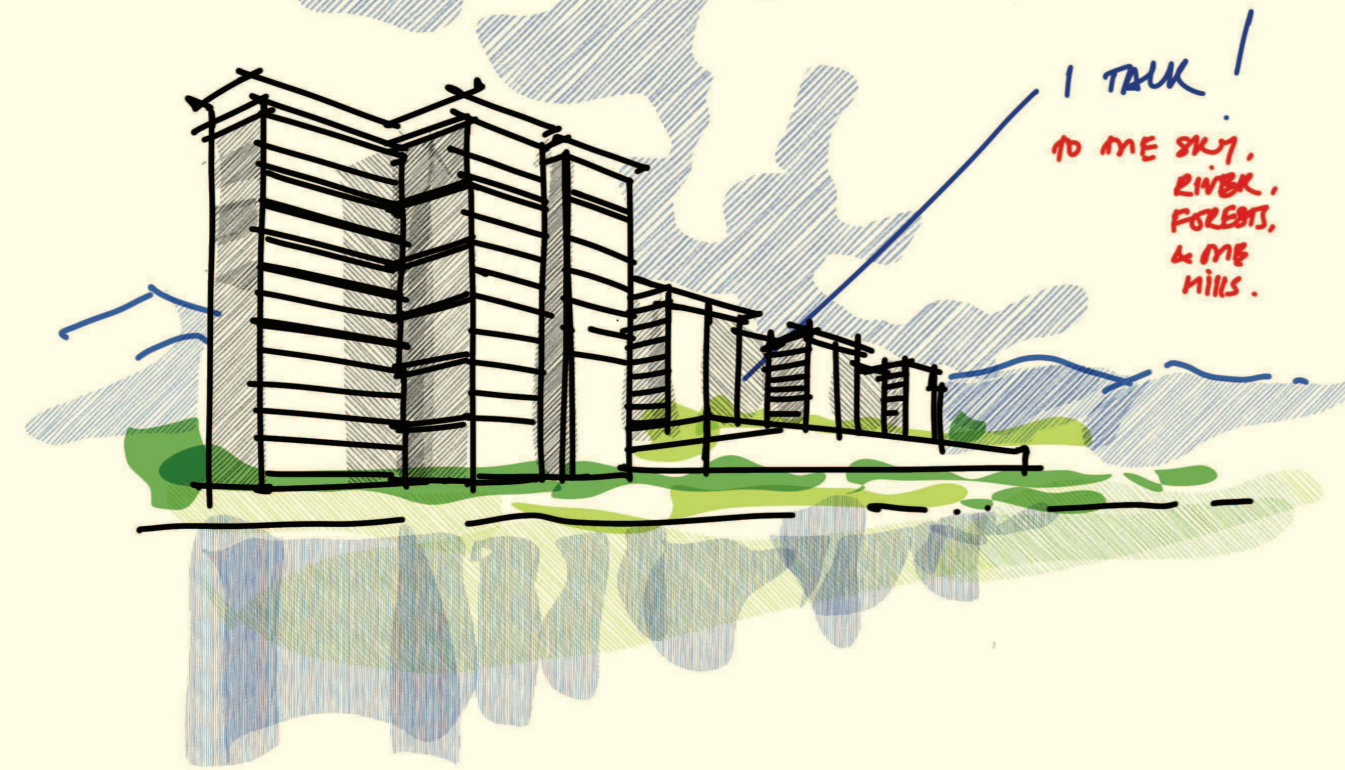
subarnarekha

Gold is flowing in the river

By the river Subarnarekha,
a premium lifestyle is growing.
It's a testimony to the gold standard life
that was long due in your wishlist.

Ar. Vivek Singh Rathore

speaks



Going home has just become an act of daily retirement, chasing a demanding daily schedule of work and activity leaves us no time for connecting.

**Connect with family & neighbourhood | Connect with friends & festivities | Connect with city & events
Connect with life & lifestyle | Connect with yourself & mindfulness | Connect with soul & spirituality
Connect with body & wellness | Connect with nature & biodiversity**

Our Scriptures suggest homes to be either close to waterbody, lakes, pond, river or the mountains and the forests. The rejuvenating ecosystem helps develop a healthy brain and body, ensuring its habitants with positivity, productivity and balanced living. The architecture should allow for better connectivity and orchestration with elements rather than isolating them into a synthetic indoor world.

Riviera is an honest endeavour to provide for all what we wish to connect. What the city has put its back to the rivers and mountains, we have cherished in our design.

The premium homes at Riviera and the lifestyle mix in its campus is designed for all age groups. Its planning and design ensures a higher happiness index to its owners.

The qualitative aspect of design has 5 premium attributes.

Quality home plans

The planning of the apartments, duplexes and penthouses consider ample daylight, sunlight infiltration and natural cross ventilation aspects carefully. Large windows offer panoramic views of the meditative river, flourishing greens and lilac mountain ranges. Utilities, connectivities and specifications aim to increase exude luxury and operational optimisation. Layouts aim in developing a cohesive living psychology among its members.

Healthy living and ecology

Good homes help its members develop a dialogue with nature, great one's admiration.

In Riviera, we believe man is nature, hence the biophyllic associations of man and nature are primary. 100 percent river front has been capitalised into a rejuvenating deck and club experience. The campus shall have over 200 trees planted attracting rich biodiversity and bird species. The river front walking and jogging experience is unparalleled when charged with rich ions from the flowing river. The enriched air with phytoncides from neighbouring greens increases our immunity and prevent many many harmful bacteria to grow.

Premium lifestyle standards

Riviera enjoys a premium cinema experience from one of the best in the city - step up to exclusive entertainment. The lounge and dining experience in the club ensure customised socialising and networking advantage to share and exchange.

Higher social and community Index

Here we believe in Vasudeva Kutumbakam, the world is one big family of God. Connecting people in the spirit of life is the genius of our culture. Be it festival, event or a social event, Riviera has one of the finest convention facilities to boast, and a first of its kind waterside lifestyle promenade which offers festival plazas laced with global and desi dining and lounging experiences. This premium necklace experience of fine dining next to river shall be the best social destination the city's cream would fetch for.

Associated workplace / business advantage

The exclusive river view boutique offices at Riviera take advantage of the dining and convention facilities making the purpose of associative networking fruitful. The daylight and views would enhance the performance index of the employees.

**Ar. Vivek Singh Rathore
Principal Architect, Salient**

location

SAI Mandir 1.9 kms | Circuit House 2.9 kms
Loyola School 3.2 kms | Sonari Airport 3.8 kms
TATA Main Hospital 4.3 kms | Bistupur Police Station 4.8 kms
Tatanagar Railway Station 8.7 kms





Picturesque *landscape* leads to your dream

The lush green surrounding, manicured sculptures, and the meandering walkways take you to your atelier.



Step into a world of your *dreams*

A magnificent front facade of the project reflects the opulence that you deserve.



Love. Live. *prayer*

Experience divinity in the temple situated in the entrance of the project. Wake up to the heavenly chant of the morning Aarti and get engrossed in peace and tranquility.

The you-of-a- *kind* apartments



Vitamin S

Stands for Sunlight.
Sun soaked rooms of Riviera
will make your life glitter with
more happiness & sunshine.

Air drop silence

The uninterrupted airflow
will bring the tide of peace
in your home & life.



All shades of greens

You name it. We have it.
Almost all shades of greens are
available in the serene surrounding.



Picturesque view

Overlooking Dalma hills in backdrop
makes it a living experience.
As you will enter your room,
the breeze flowing over the river
will calm your senses.



5

factors that make it a place of

x-factor

Your impeccable taste of luxury will be soothed by the facilities of the club above the podium. A series of ultra-modern features along with swanky swimming pool, urbane gym and other facilities has made Club Riviera very much exclusive.

club

Riviera

- Zero-gravity
- Cheer
- Relaxation
- Nirvana
- Health

zero-gravity



The 25 meter infinity edge pool, kid's pool, aqua gym over the podium add luxurious quotient to your dream home.



Fully-equipped air conditioned gymnasium,
half basketball court, volleyball court, cricket pitch
keep you in shape and take care of your health.



Floodlit Futsal ground (Mini Football ground), kids' play area, indoor games are developed for your cheerful and happy heart.

Pool Table | Table Tennis | Toddlers' Play Area | Card Room



The cabana deck by the entertainment zone, bon fire zone are made to enhance the relaxation factor of the luxurious club.

Picturesque Reading Room | Gazibos & Cabanas
Barbeque Area | Cafeteria with a Designer
Sky Lounge | Senior Citizens' Pavilion



Yoga & meditation by the river. Aqua pressure path are designed to control the balance inside and outside.

Specially-designed Temple with Meditation Zone
Fragrance Garden | Amphitheatre with Lawn
Jogging Track | Zumba | Aerobics

Buzz of the city
Jazz of the

cuisines

Imagine an exclusive row of boutique restaurants
growing in your vicinity, attached to your dream home.
Then every day will be fiesta day with your kith and kin.
Because culinary fest will be knocking
at your door more often than now.



Movie experience gets better with

gold



The 60 seaters all-new gold class multiplex with 3 screens, **Payal Gold**, will redefine your entire experience of watching movies.

Exclusive arena for your

celebration

The sprawling banquet
equipped with all types of convenience
is perfect to celebrate the special
moments of your life.



Principal Architect
Vivek Singh Rathore

Vivek Singh Rathore, Design Principal of Salient a multidisciplinary design studio operating from Kolkata, has the vision to evolve the new age value system in the Indian design environment.

He passed from IIT Roorkee with a gold medal in the year 2000 and established the studio in 2005. His team is supported by partner and Landscape Principal Anuradha Rathore, 8 associates and over 40 members.

Salient is conferred with over 80 design awards till today including 15 international mentions.

The studio welds its multiple skills in architecture, landscape, interior design and environmental graphics to provide sensible design solutions keeping man and environment in the tallest order.

The design philosophy has its roots in Indian values, scientific research, humility, sustainability, spirituality and the art of discovery.. The design expression consciously delves in evolving variety getting inspired by THE CONTEXT.

The studio has a portfolio of projects ranging from master planning, urban design, mixed-use development, leisure and hospitality, healthcare, commercial and residential projects.



Landscape Architect
Anuradha Rathore

B. Arch- IIT Roorkee, Masters in Landscape Architecture from CEPT, Ahmedabad.

She has been participating with all large and small scale projects of Salient, weaving in colours of nature into the spaces. Design processes at Salient believe in refining nature, engaging culture and sustaining them both. With constant interaction of technology & tradition, keeping deepest respect for nature, the studio strives to produce designs of highest calibre.

Her landscape works at the Studio have been internationally and nationally recognised with many awards for design excellence and sustainability. To name a few:

Indian Institute of Architects (IIA), Indian Society for landscape architects (ISOLA), World Architecture Festival (WAF), Cityscape Global, Asia - Pacific Awards, CWAB, NDTV

She has also been a guest lecturer at IIT - Kharagpur, Jadavpur University, Om Dayal Architecture College, IIT Roorkee & Amity University



Structural Consultant
Sanjiv J Parekh

S.P.A. CONSULTANTS, a firm of Structural Engineers was started in the year 1987 in a small way by Mr. Sanjiv J. Parekh, having four years of working experience in Mumbai. Gradually the firm has now grown in a modest size having a pool of three Associates, four Design Engineers and 17 CAD Engineers .In the year 2010 , Mr. Sanjiv Parekh along with other directors floated M/S, S.P.A. CONSULTANTS PVT. LTD., having registered office at 34, Rammohan Dutta Road, Kolkata-700 020 in a new shape and added activities. The firm provides consultancy services in the field of Structural Engineering for various type of projects.



Services Consultant
Avinish Nayyar

Sunil Nayyar Consulting Engineers LLP is a multi-disciplinary building services engineering design consultancy firm dealing in Electrical, HVAC, Public Health & Fire Fighting, IBMS, IAQ (MEPFF), Green Buildings and Lighting Design consultancy services in buildings and infrastructure segment. Over 25 years of rich expertise in MEP consultancy. The firm was established in 1991 by Mr. Sunil Nayyar. SNC has Designed services in over 1000 projects for some of the leading developers and clients such as HINES (USA), K Raheja Corp, Kalpataru, Ascendas Sing-Bridge, Virtuous Retail Singapore, DLF, Birla Estates, Shapoorji Pallonji, Oberoi Hotels, Unitech, Apollo Hospitals, Godrej, Mahindra, ITC, IREO, MGF, Tata Trusts etc. ranging from complex needs of hotels and hospitals to tenant-developer balance in IT parks and retail to the high precision air-conditioning of sporting venues.

Besides, SNC has been a leading services consultancy provider of MEP works for interior fit-outs of clients ranging from Microsoft, Oracle, Fidelity, Lucent-Alcatel, Ernst & Young, Nokia, AMEX, IBM, Daksh, Cisco, Serco, Apple, British Council, Siemens, WPP etc. In 2009, SNC was one of the five firms in India to be empanelled by India's leading Infrastructure public sector unit C.P.W.D. (Central Public Works Department) under Category 'A' HVAC Consultants. SNC designed the landmark One Horizon Centre on Golf Course Road, Gurgaon for US Based developer Hines, which was awarded the best commercial High Rise building in India at the 'Asia PacificInternational Property Awards' 2013-14.

SNC has an active profile of projects panning Delhi NCR, Mumbai, Pune, Hyderabad, Chennai, Bangalore, Kolkata etc.



Developing the
landscape for creating

landmarks

With over 3 decades of experience, Aakash (India) Projects & Builders Pvt. Ltd has garnered fame and become one of the leading real estate developer in Jamshedpur. The Group has firmly established itself as a trustworthy and dependable organization in Real Estate industry that delivers quality.

With a track record of sustained growth, customer satisfaction and innovation, the group has completed valuable projects in Jharkhand and Odisha. Combining the best of design and technologies the group delivers projects to suit its customers' expectation across different categories.